

Network Camera User Manual

SAFETY PRECAUTIONS

- Please read this instruction carefully for correct use of the product and preserve it for reference purposes.
- Please use the specified power supply to connect.
- Do not attempt to disassemble the camera; in order to prevent electric shock, do not remove screws or covers.
- There are no user-serviceable parts inside. Please contact the nearest service center as soon as possible if there is any failure.
- Avoid from incorrect operation, shock vibration, heavy pressing which can cause damage to product.
- Do not use corrosive detergent to clean main body of the camera. If necessary, please use soft dry cloth to wipe dirt; for hard contamination, use neutral detergent. Any cleanser for high grade furniture is applicable.
- Avoid aiming the camera directly towards extremely bright objects, such as, sun, as this may damage the image sensor.
- Please follow the instructions to install the camera. Do not reverse the camera, or the reversing image will be received.
- Do not operate it incase temperature, humidity and power supply are beyond the limited stipulations.
- Keep away from heat sources such as radiators, heat registers, stove, etc.
- Do not expose the product to the direct airflow from an air conditioner.
- This is product instructions not quality warranty. We may reserve the rights of amending the typographical errors, inconsistencies with the latest version, software upgrades and product improvements, interpretation and modification. These changes will be published in the latest version without special notification.
- When this product is in use, the relevant contents of Microsoft, Apple and Google will be involved in. The pictures and screenshots in this manual are only used to explain the usage of our product. The ownerships of trademarks, logos and other intellectual properties related to Microsoft, Apple and Google belong to the above-mentioned companies.
- This manual is suitable for IR water-proof network camera. All pictures and examples used in the manual are for reference only.

Introduction

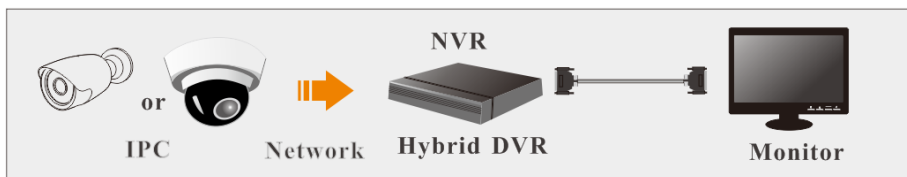
This IP-CAMERA (short for IP-CAM) is designed for high performance CCTV solutions. It adopts state of the art video processing chips. It utilizes most advanced technologies, such as video encoding and decoding technology, complies with the TCP/IP protocol, SoC, etc to ensure this system more stable and reliable.

This product is widely used in banks, telecommunication systems, electricity power departments, law systems, factories, storehouses, uptowns, etc. In addition, it is also an ideal choice for surveillance sites with middle or high risks.

Main Features

- ICR auto switch, true day/night
- 3D DNR, digital WDR
- ROI coding
- Support smart phone, iPad, remote monitoring

Surveillance Application



IE Remote Access

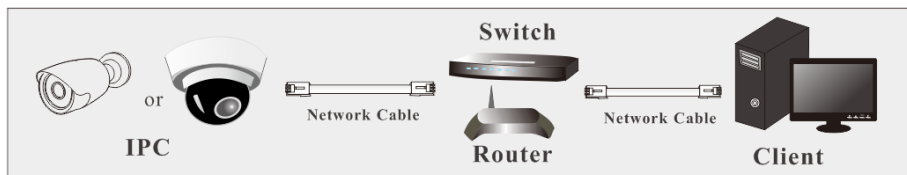
You may connect IP-Cam via LAN or WAN. Here only take IE browser (6.0) for example. The details are as follows:

LAN

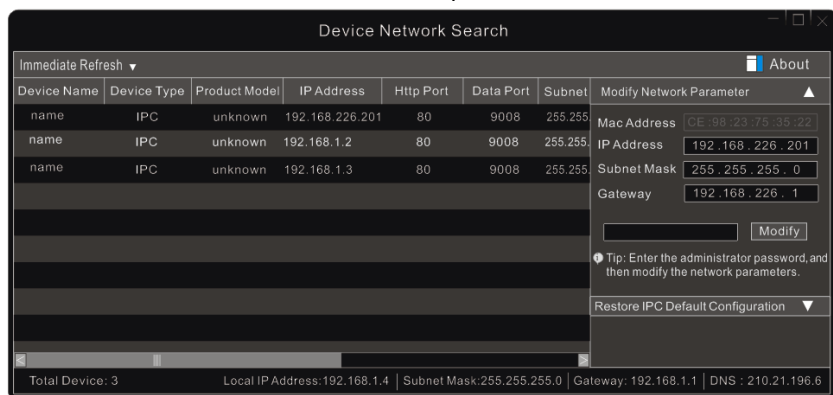
In LAN, there are two ways to access IP-Cam: 1. access through IP-Tool; 2. directly access through IE browser.

Access through IP-Tool

Network connection:



- ① Make sure the PC and IP-Cam are connected to the LAN and the IP-Tool is installed in the PC from the CD.
- ② Double click the IP-Tool icon on the desktop to run this software as shown below:



- ③ Modify the IP address. The default IP address of this camera is 192.168.226.201. Click the information of the camera listed in the above table to show the network information on the right hand. Modify the IP address and gateway of the camera and make sure its network address is in the same local network segment as the computer's. Please modify the IP address of your device according to the practical situation.

Modify Network Parameter

Mac Address: CE :98 :23 :75 :35 :22

IP Address: 192.168.1.201

Subnet Mask: 255.255.255.0

Gateway: 192.168.1.1

••••• Modify

For example, the IP address of your computer is 192.168.1.4. So the IP address of the camera shall be changed to 192.168.1.X. After modification, please input the password of the administrator and click “Modify” button to modify the setting.



The default password of the administrator is “**123456**”.

④ Double click the IP address and then the system will pop up the IE browser to connect IP-CAM. IE browser will auto download the Active X control. After downloading, a login window will pop up as shown below.

webcam

Name: admin

Password: •••••

Stream Type: 2048x1536 30fps

Language: English

☒ Remember me

Login

Input the username and password to log in. If you input the wrong password for the first time, you shall wait for 10 seconds and then input the right password.



The default username is “**admin**”; the default password is “**123456**”.

Directly Access through IE

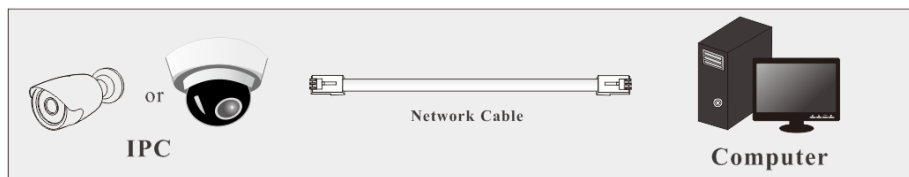
The default network settings are as shown below:

IP address: **192.168.226.201** Subnet Mask: **255.255.255.0**

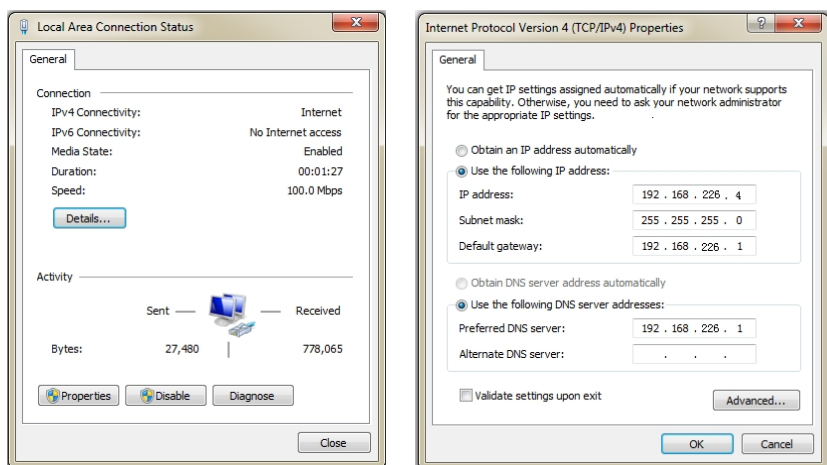
Gateway: **192.168.226.1** HTTP: **80**

Data port: **9008**

You may use the above default settings when you log in the camera for the first time. You may directly connect the camera to the computer through network cable.



① Manually set the IP address of the PC and the network segment should be as the same as the default settings of the IP camera. Open the network and share center. Click “Local Area Connection” to pop up the following window. Select “Properties” and then select internet protocol according to the actual situation (for example: IPv4). Next, click “Properties” button to set the network of the PC.



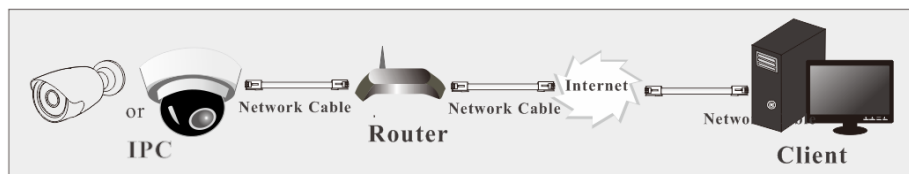
② Open the IE browser and input the default address of IP-CAM and confirm. The IE browser will download Active X control automatically.

③ After downloading Active X control, the login dialog box will pop up.

④ Input the default username and password and then enter to view.

WAN

➤ **Access through the router or virtual server**



- ① Make sure the camera is well connected via LAN and then log in the camera via LAN. Go to Config→Network →Port menu to set the port number.

HTTP Port	80
Data Port	9008
RTSP Port	554

- ② Go to Config →Network → TCP/IPv4 menu to modify the IP address.

IP Config		PPPoE Config	IP Change Notification Config
<input type="radio"/> Obtain an IP address automatically			
<input checked="" type="radio"/> Use the following IP address			
IP Address	192.168.1.201		
Subnet Mask	255.255.255.0		
Gateway	192.168.1.1		
<input type="radio"/> Obtain DNS server address automatically			
<input checked="" type="radio"/> Use the following DNS server			
Preferred DNS Server	192.168.1.1		
Alternate DNS Server	8.8.8.8		

- ③ Go to the router's management interface through IE browser to forward the IP address and port of the camera in the "Virtual Server".

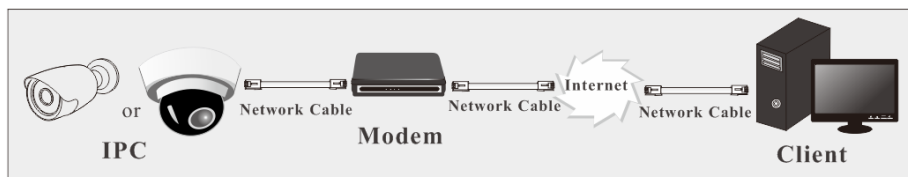
Port Range					
Application	Start	End	Protocol	IP Address	Enable
1	9007	to 9008	Both	192.168.1.201	<input checked="" type="checkbox"/>
2	80	to 81	Both	192.168.1.201	<input checked="" type="checkbox"/>
3	10000	to 10001	Both	192.168.1.166	<input type="checkbox"/>
4	21000	to 21001	Both	192.168.1.166	<input type="checkbox"/>

Router Setup

- ④ Open the IE browser and input its WAN IP and http port to access.

➤ Access through PPPoE dial-up

Network connection



You may access the camera through PPPoE auto dial-up. The setting steps are as follow:

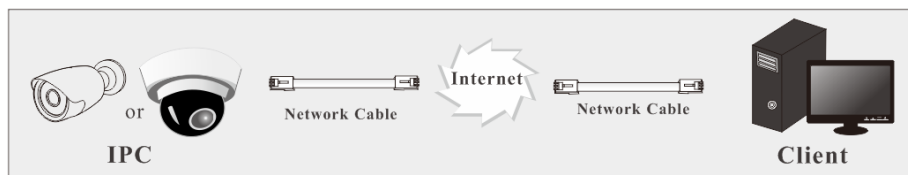
- ➊ Go to Config→Network →Port menu to set the port number.
- ➋ Go to Config →Network →TCP/IPv4→PPPoE Config menu. Check “Enable ” and then input the user name and password which you can get from your internet service provider.

IP Config	PPPoE Config	IP Change Notification Config
<input checked="" type="checkbox"/> Enable		
User Name		<input type="text"/>
Password		<input type="text"/>

- ➌ Go to Config →Network →DDNS menu. Before you configure the DDNS, please apply for a domain name first. Please refer to DDNS Configuration for detail information.
- ➍ Open the IE browser and input the domain name and http port to access.

➤ Access through static IP

Network connection



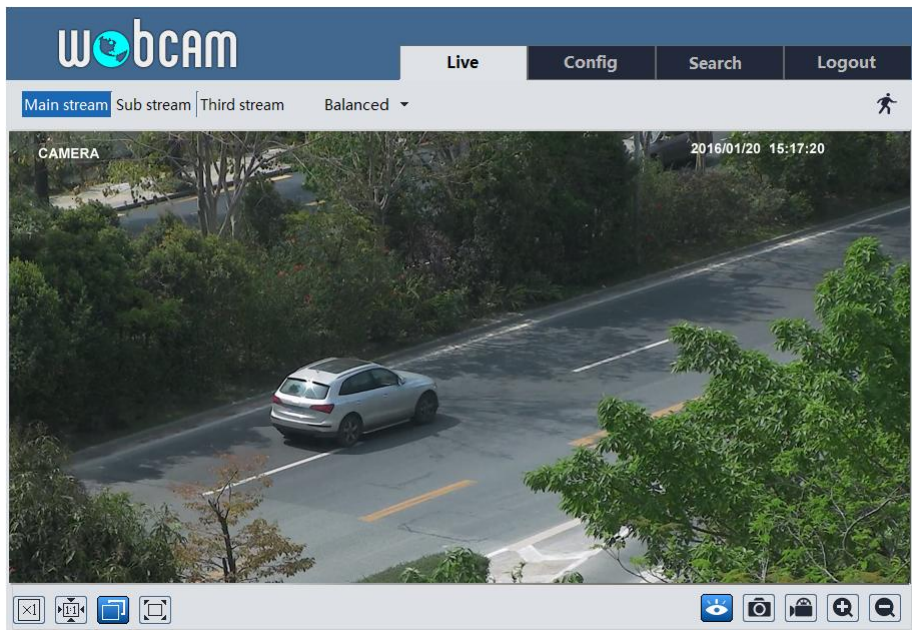
The setting steps are as follow:

- ➊ Go to Config→Network Config→Port menu to set the port number.
- ➋ Go to Config →Network Config→IP Address menu to set the IP address. Check “Use the following IP address” and then input the static IP address and other parameters.
- ➌ Open the IE browser and input its WAN IP and http port to access.

Remote Preview

The Remote Preview Interface

After you log in, you will see the following window.



The following table is the instructions of the icons on the remote preview interface.

Icon	Description	Icon	Description
	Motion alarm indicator icon		Start/stop live view
	Original size		Snap
	Appropriate size		Start/stop record
	Auto		Zoom in
	Full screen		Zoom out

- When motion detection alarm is triggered, the people icon will turn red.
- In full screen mode, right click to exit.